

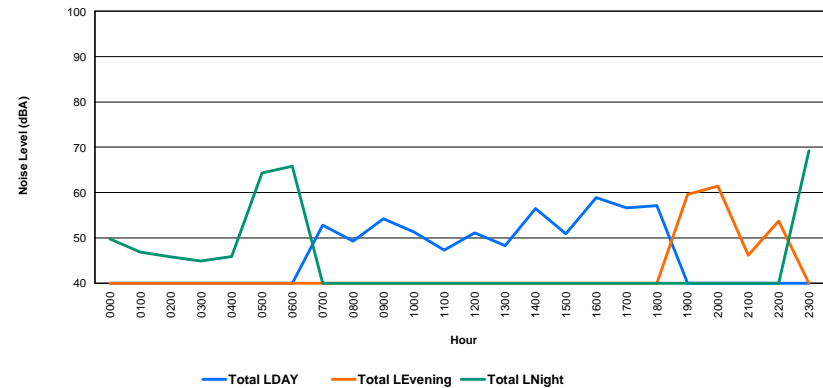
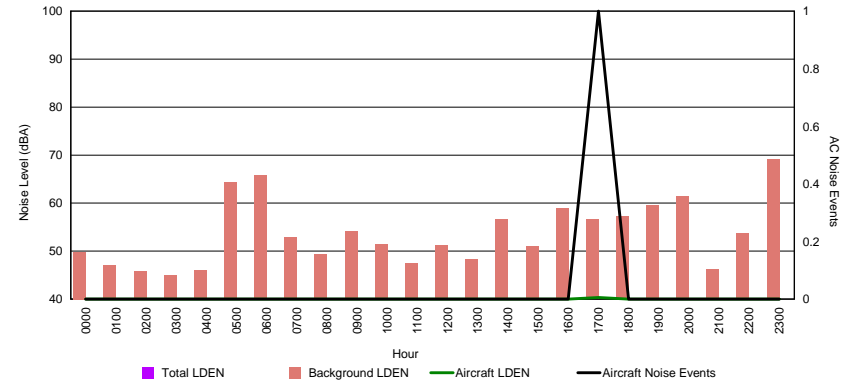


## Luxembourg Airport Noise Distribution by Hour

Between 20/05/2012 00:00:00 and 20/05/2012 23:59:59 (Local Time)

Day	Aircraft Events	Total LDEN	Aircraft LDEN dB(A)	Background LDEN dB(A)	Total LDay dB(A)	Total LEvening dB(A)	Total LNight dB(A)
20/05/12 0:00	-	49.8	-	49.8	-	-	49.8
20/05/12 1:00	-	46.9	-	46.9	-	-	46.9
20/05/12 2:00	-	45.8	-	45.8	-	-	45.8
20/05/12 3:00	-	44.9	-	44.9	-	-	44.9
20/05/12 4:00	-	45.9	-	45.9	-	-	45.9
20/05/12 5:00	-	64.3	-	64.3	-	-	64.3
20/05/12 6:00	-	65.8	-	65.8	-	-	65.8
20/05/12 7:00	-	52.8	-	52.8	52.8	-	-
20/05/12 8:00	-	49.3	-	49.3	49.3	-	-
20/05/12 9:00	-	54.2	-	54.2	54.2	-	-
20/05/12 10:00	-	51.3	-	51.3	51.3	-	-
20/05/12 11:00	-	47.3	-	47.3	47.3	-	-
20/05/12 12:00	-	51.1	-	51.1	51.1	-	-
20/05/12 13:00	-	48.3	-	48.3	48.3	-	-
20/05/12 14:00	-	56.5	-	56.5	56.5	-	-
20/05/12 15:00	-	50.9	-	50.9	50.9	-	-
20/05/12 16:00	-	58.9	-	58.9	58.9	-	-
20/05/12 17:00	1	56.6	40.3	56.5	56.6	-	-
20/05/12 18:00	-	57.1	-	57.1	57.1	-	-
20/05/12 19:00	-	59.6	-	59.6	-	59.6	-
20/05/12 20:00	-	61.4	-	61.4	-	61.4	-
20/05/12 21:00	-	46.2	-	46.2	-	46.2	-
20/05/12 22:00	-	53.7	-	53.7	-	53.7	-
20/05/12 23:00	-	69.2	-	69.2	-	-	69.2
	<b>1</b>	<b>59.4</b>	<b>40.3</b>	<b>59.4</b>	<b>54.3</b>	<b>58.1</b>	<b>62.7</b>

Location: Roodt/Syr NMT # 1

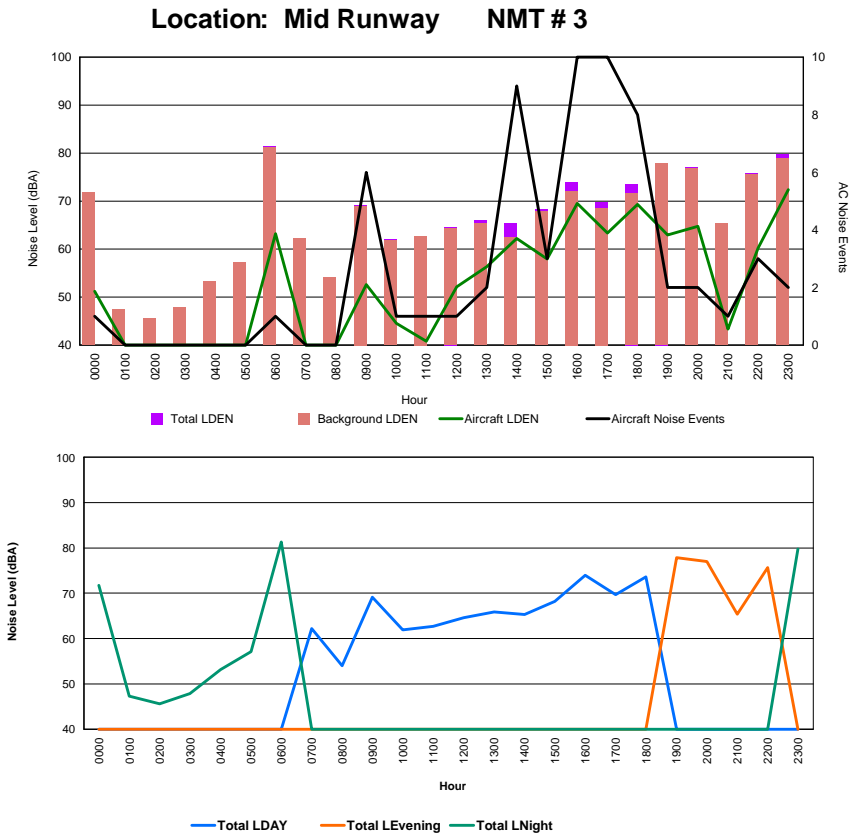




## Luxembourg Airport Noise Distribution by Hour

Between 20/05/2012 00:00:00 and 20/05/2012 23:59:59 (Local Time)

Day	Aircraft Events	Total LDEN	Aircraft LDEN dB(A)	Background LDEN dB(A)	Total LDay dB(A)	Total LEvening dB(A)	Total LNight dB(A)
20/05/12 0:00	1	71.7	51.2	71.7	-	-	71.7
20/05/12 1:00	-	47.3	-	47.3	-	-	47.3
20/05/12 2:00	-	45.6	-	45.6	-	-	45.6
20/05/12 3:00	-	47.9	-	47.9	-	-	47.9
20/05/12 4:00	-	53.2	-	53.2	-	-	53.2
20/05/12 5:00	-	57.1	-	57.1	-	-	57.1
20/05/12 6:00	1	81.3	63.2	81.2	-	-	81.3
20/05/12 7:00	-	62.2	-	62.2	62.2	-	-
20/05/12 8:00	-	54.0	-	54.0	54.0	-	-
20/05/12 9:00	6	69.1	52.6	69.0	69.1	-	-
20/05/12 10:00	1	61.9	44.5	61.8	61.9	-	-
20/05/12 11:00	1	62.7	40.8	62.7	62.7	-	-
20/05/12 12:00	1	64.6	52.1	64.3	64.6	-	-
20/05/12 13:00	2	65.9	56.3	65.4	65.9	-	-
20/05/12 14:00	9	65.3	62.2	62.4	65.3	-	-
20/05/12 15:00	3	68.2	57.9	67.8	68.2	-	-
20/05/12 16:00	10	74.0	69.5	72.1	74.0	-	-
20/05/12 17:00	10	69.7	63.3	68.6	69.7	-	-
20/05/12 18:00	8	73.6	69.3	71.6	73.6	-	-
20/05/12 19:00	2	77.9	62.9	77.8	-	77.9	-
20/05/12 20:00	2	77.0	64.7	76.7	-	77.0	-
20/05/12 21:00	1	65.4	43.3	65.4	-	65.4	-
20/05/12 22:00	3	75.7	60.2	75.6	-	75.7	-
20/05/12 23:00	2	79.8	72.4	78.9	-	-	79.8
	<b>63</b>	<b>73.1</b>	<b>64.5</b>	<b>72.6</b>	<b>68.6</b>	<b>75.8</b>	<b>74.9</b>



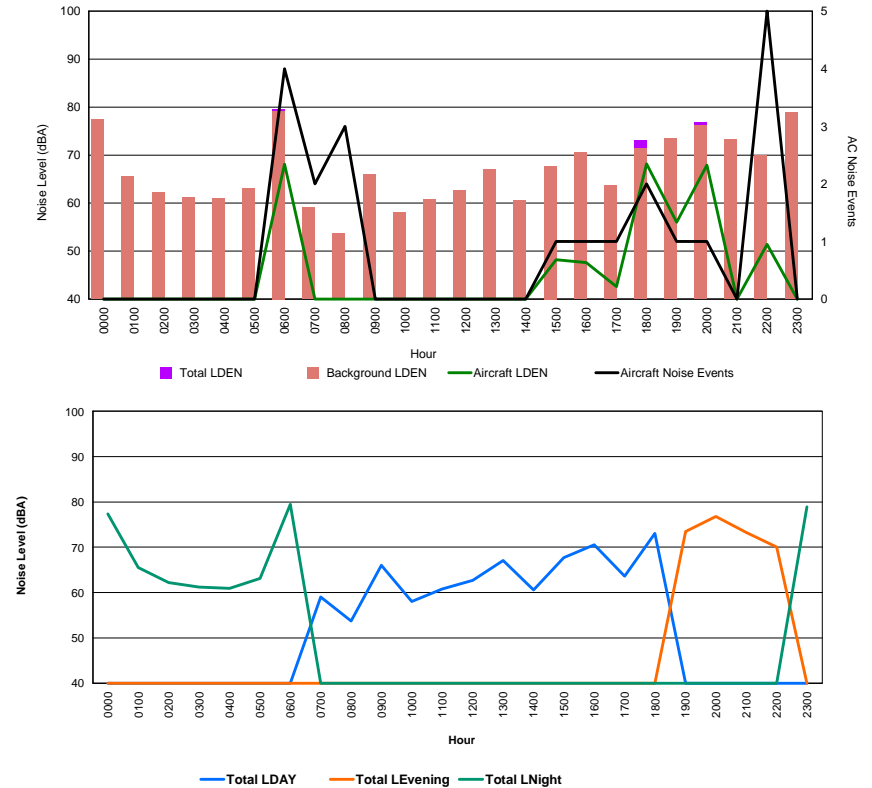


## Luxembourg Airport Noise Distribution by Hour

Between 20/05/2012 00:00:00 and 20/05/2012 23:59:59 (Local Time)

Day	Aircraft Events	Total LDEN	Aircraft LDEN dB(A)	Background LDEN dB(A)	Total LDay dB(A)	Total LEvening dB(A)	Total LNight dB(A)
20/05/12 0:00	-	77.4	-	77.4	-	-	77.4
20/05/12 1:00	-	65.5	-	65.5	-	-	65.5
20/05/12 2:00	-	62.2	-	62.2	-	-	62.2
20/05/12 3:00	-	61.2	-	61.2	-	-	61.2
20/05/12 4:00	-	60.9	-	60.9	-	-	60.9
20/05/12 5:00	-	63.1	-	63.1	-	-	63.1
20/05/12 6:00	4	79.5	68.1	79.2	-	-	79.5
20/05/12 7:00	2	59.0	37.2	59.0	59.0	-	-
20/05/12 8:00	3	53.7	36.4	53.6	53.7	-	-
20/05/12 9:00	-	66.0	-	66.0	66.0	-	-
20/05/12 10:00	-	58.0	-	58.0	58.0	-	-
20/05/12 11:00	-	60.8	-	60.8	60.8	-	-
20/05/12 12:00	-	62.7	-	62.7	62.7	-	-
20/05/12 13:00	-	67.1	-	67.1	67.1	-	-
20/05/12 14:00	-	60.6	-	60.6	60.6	-	-
20/05/12 15:00	1	67.7	48.2	67.7	67.7	-	-
20/05/12 16:00	1	70.5	47.6	70.5	70.5	-	-
20/05/12 17:00	1	63.6	42.6	63.6	63.6	-	-
20/05/12 18:00	2	73.1	68.2	71.4	73.1	-	-
20/05/12 19:00	1	73.5	56.0	73.4	-	73.5	-
20/05/12 20:00	1	76.8	67.9	76.2	-	76.8	-
20/05/12 21:00	-	73.3	-	73.3	-	73.3	-
20/05/12 22:00	5	70.0	51.4	69.9	-	70.0	-
20/05/12 23:00	-	78.9	-	78.9	-	-	78.9
	<b>21</b>	<b>72.1</b>	<b>63.0</b>	<b>71.9</b>	<b>66.6</b>	<b>74.0</b>	<b>74.6</b>

Location: NDB-Hamm NMT # 4





## Luxembourg Airport Noise Distribution by Hour

Between 20/05/2012 00:00:00 and 20/05/2012 23:59:59 (Local Time)

Day	Aircraft Events	Total LDEN	Aircraft LDEN dB(A)	Background LDEN dB(A)	Total LDay dB(A)	Total LEvening dB(A)	Total LNight dB(A)
20/05/12 0:00	-	71.8	-	71.8	-	-	71.8
20/05/12 1:00	-	67.7	-	67.7	-	-	67.7
20/05/12 2:00	-	66.7	-	66.7	-	-	66.7
20/05/12 3:00	-	66.3	-	66.3	-	-	66.3
20/05/12 4:00	-	65.2	-	65.2	-	-	65.2
20/05/12 5:00	-	66.9	-	66.9	-	-	66.9
20/05/12 6:00	1	73.2	62.4	72.8	-	-	73.2
20/05/12 7:00	-	68.0	-	68.0	68.0	-	-
20/05/12 8:00	1	57.9	42.5	57.8	57.9	-	-
20/05/12 9:00	-	60.9	-	60.9	60.9	-	-
20/05/12 10:00	-	60.2	-	60.2	60.2	-	-
20/05/12 11:00	-	61.2	-	61.2	61.2	-	-
20/05/12 12:00	-	61.0	-	61.0	61.0	-	-
20/05/12 13:00	-	62.1	-	62.1	62.1	-	-
20/05/12 14:00	1	61.0	37.9	61.0	61.0	-	-
20/05/12 15:00	-	62.4	-	62.4	62.4	-	-
20/05/12 16:00	-	64.4	-	64.4	64.4	-	-
20/05/12 17:00	1	60.7	46.3	60.5	60.7	-	-
20/05/12 18:00	-	66.3	-	66.3	66.3	-	-
20/05/12 19:00	-	68.0	-	68.0	-	68.0	-
20/05/12 20:00	-	68.9	-	68.9	-	68.9	-
20/05/12 21:00	-	67.7	-	67.7	-	67.7	-
20/05/12 22:00	1	65.5	43.6	65.5	-	65.5	-
20/05/12 23:00	-	71.4	-	71.4	-	-	71.4
	<b>5</b>	<b>67.0</b>	<b>55.6</b>	<b>67.0</b>	<b>63.1</b>	<b>67.7</b>	<b>69.6</b>

Location: Gare centrale NMT # 5

